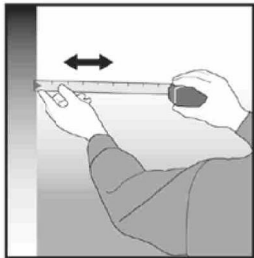




Easy and quick installation

ENVIROCLAD permits an easy, clean and quick installation. It can be fixed to any surface without using adhesive or derivatives, which saves both time and money. Follow these simple step-by-step instructions for the above mentioned products.



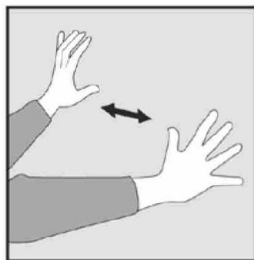
1. Measure the surface to be covered and calculate the number of panels needed.



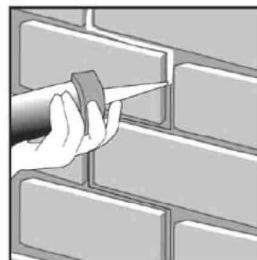
2. When starting the work, cut one side of the panel to get a completely straight edge.



3. Fit the panel to the wall and drill through the panel directly into the wall using a 6mm drill bit. Put the screw into the wall-plug and introduce both into the hole in the panel. Push and screw them in until the panel is securely fixed. (e.g. "Fischer" 6mm wall plug and 4.5 x 40 screws are recommended). Use as many screws per panel as needed.



4. Repeat this procedure with the other panels which are designed to fit perfectly.



5. Once the whole wall has been covered with the panels fill the joints and screw wholes with glue- paste.



6. When filled remove any irregularities in the paste with a fine brush. Once the paste is completely dry (approx. 24 hours), paint the joints and screw holes with ENVIROCLAD special paint, to give a perfect finish.

Corner Fixing

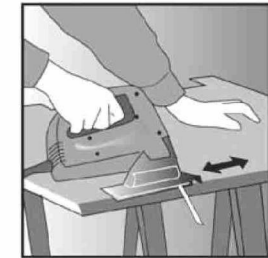
For external and pillars the panels need to be cut at an angle by following the steps below.



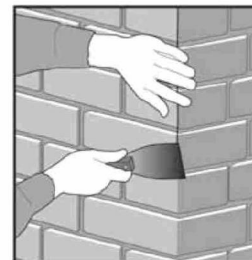
A. When you reach an external corner, mark on the inside of the panel line a line where the panel meets the wall. (This will be the inside line of the cut)



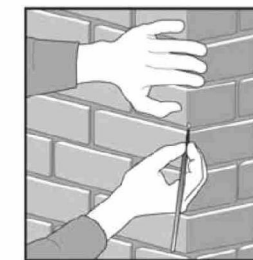
A. From this line, mark all parallel line away from the wall at a distance equal to double the thickness of the panel - between 2 and 4 cm depending on the model. (This will be the outside line of the cut)



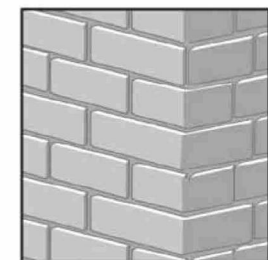
C. Set a jigsaw to 45° and use it to cut between the lines.



D. Offer the panel up to the corner and fix it to the wall. Fill the joint and the holes.



E. When the joint is filled, remove any irregularities in the paste with a fine brush.



F. Once the filler paste is dry, paint the joint with ENVIROCLAD special paint.